



MS41 Eco Solvent Inks

Specifically developed for Mutoh's XpertJet 64" Sign & Display printers, the MS41 inks are a new generation of cost-effective & low maintenance Eco Solvent inks enabling printing on the widest range of uncoated and coated substrates.

Available in 1 litre & 300 ml ink packs, the 7 colour MS41 inks (C, M, Y, K, Lc, Lm, Lk) feature a wide colour gamut and deliver vibrant high density prints with excellent dot gain. The additional Lc, Lm and Lk colours will bring extra quality to businesses focusing on highest quality prints with smooth skin tones & gradients for short viewing distances. Suited for long term outdoor and indoor applications, Mutoh's MS41 inks have an excellent weather, abrasion and chemical resistance. UV durability without lamination is rated up to 3 years outdoor.

Mutoh's MS41 inks have obtained GREENGUARD Gold Certification. As such, the inks meet some of the world's most stringent and comprehensive standards for low emissions of volatile organic compounds (VOCs) into indoor air. Prints made with MS41 inks are perfectly suited for indoor applications including offices, classrooms and healthcare environments.

Product Highlights

- 1 liter & 300 ml packs in foil, for use in re-usable ink cases
- 7 colours – C, M, Y, K, Lc, Lm, Lk.
- Wide colour gamut. Vibrant high density prints, excellent dot gain.
- Cost-effective and operator-friendly thanks to low maintenance.
- Suited for long term outdoor and indoor commercial graphics.
- Excellent abrasion and chemical resistance scores.
- UV durability without lamination up to 3 years outdoor*
- GREENGUARD Gold Certification, category Wallpaper



* For heavy-duty applications where mechanical stress or environmental impact is involved (floor, vehicle and marine graphics), lamination is required. Stabilisation is required prior to lamination.



CMYK + Lc, Lm & Lk



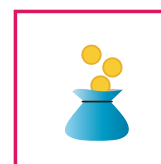
Piezo Variable Drop



Outdoor / Indoor



UX Ranking



Cost Effective



Technology

Mutoh MS41 Eco Solvent inks are Mutoh's fourth generation of eco inks. The inks have been specifically developed for the piezo drop-on-demand head technology integrated in Mutoh's XpertJet Sign & Display printers. The print heads can jet ink drops from 3.5 pl to 35 pl. MS41 inks are suited for both indoor and outdoor commercial graphics applications. The cost-effective and low maintenance inks are delivered in ink packs in foil which go into the XpertJet's re-usable ink pack cases.

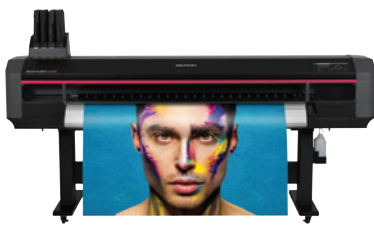
Application Possibilities

MS41 inks will create durable prints on coated and uncoated substrates and have been specifically developed for high quality volume production of sign & display graphics, for long-term outdoor applications as well as durable prints for indoor use : posters, backlit signage, wall coverings, point-of-sale displays, fine art reproduction, vehicle graphics, stickers and much more.



MS41 - Ink Volumes & Printer Compatibility

XpertJet 1641SR – 1625 mm – 64" – single head	1 litre & 300 ml ink packs - CMYK
XpertJet 1682SR – 1625 mm – 64" – dual head	1 litre & 300 ml ink packs - 2 x CMYK or CMYK + Lk, Lc & Lm



XPJ-1641SR



XPJ-1682SR

Distributed by

